

- 30 x Heliene 60M 300W Modules (10 x 3 in series)
- 2 x MNPV6HV-DISCO 4X-PSB (Includes MNSPD-600-DC & MNDISCOPSB)
Disconnecting Combiner Box w/6 x 15A DC Fuses each combiner
50' each of AWG #10 PV Wire (Red and Black)
- Quick Mount PV Rail-Free Mounting System (for 30 modules, Portrait, Sloped Shingle Roof, 24" OC)
- 1 x MNEMS4448PAED-2CL150-RSS Midnite Solar Pre-Wired Inverter E-Panel System w/Rapid Shutdown includes;
 - 2 x Magnum MS4448PAE Pure Sine Inverter 120/240V w/Router (ME-RC50)
 - 2 x Classic 150 MPPT Solar Charge Controller w/80A Input & 100A Output DC Breakers ea.(CLASSIC 150)
 - 2 x 175A Main DC Breaker (MNEDC175RT for RSS)
 - 2 x 50A AC Output Breakers 2 Pole (MNEAC50-2P)
 - 1 x 30A AC Input Breaker 2 Pole (MNEAC30QZD-2P)
 - 1 x 30A AC Input Breaker 2 pole (MNEAC30-2P)
 - 1 x 60A AC Bypass Breaker
 - 2 x 300V AC Surge Protection Device (Input & Output) (MNSPD-300-AC)
 - 2 x 300V DC Surge Protection Device (PV Input) (MNSPD-300-DC)
 - WhizBang Jr. Current Sense Module for DC Shunt (MNWBJR)
 - Battery Temperature Sensor (MNBTS)
 - Battery Disconnect Module for Panel System (MNBDM)
 - MNEDC5 Breaker (for MNBDM)
- 1 x Rapid Shutdown Controller (MNBIRDHOUSE1-RED or GRAY)
- 1 x Shut Off Box (MNSOB3R-2P-75A-PSB)
- 1 x Short BusBar- White for SOB (MNSBB-W)
- 1 x MNCAT5-600 Cat 5 Cable (length TBD by client)

Batteries

- 24 x 6CRP525 Crown 6V 395 A/h L16 Flooded Deep Cycle Batteries*
 - 21 x 4/0 12" DC Series Battery Cables, UL Listed (MNXFLEX4/0-W12)
 - 4 x 4/0 24" DC Parallel Battery Cable, UL Listed (2 x MNXFLEX4/0-R24, 2 x MNXFLEX4/0-W24)
 - 2 x 4/0 60" DC Battery to Inverter Cables, UL Listed (1 x MNXFLEX4/0-W60, 1 x MNXFLEX4/0-R60)
- *Substitute 24 x 6CRV390 Crown 6V 390 A/h (L16) AGM Batteries for additional cost

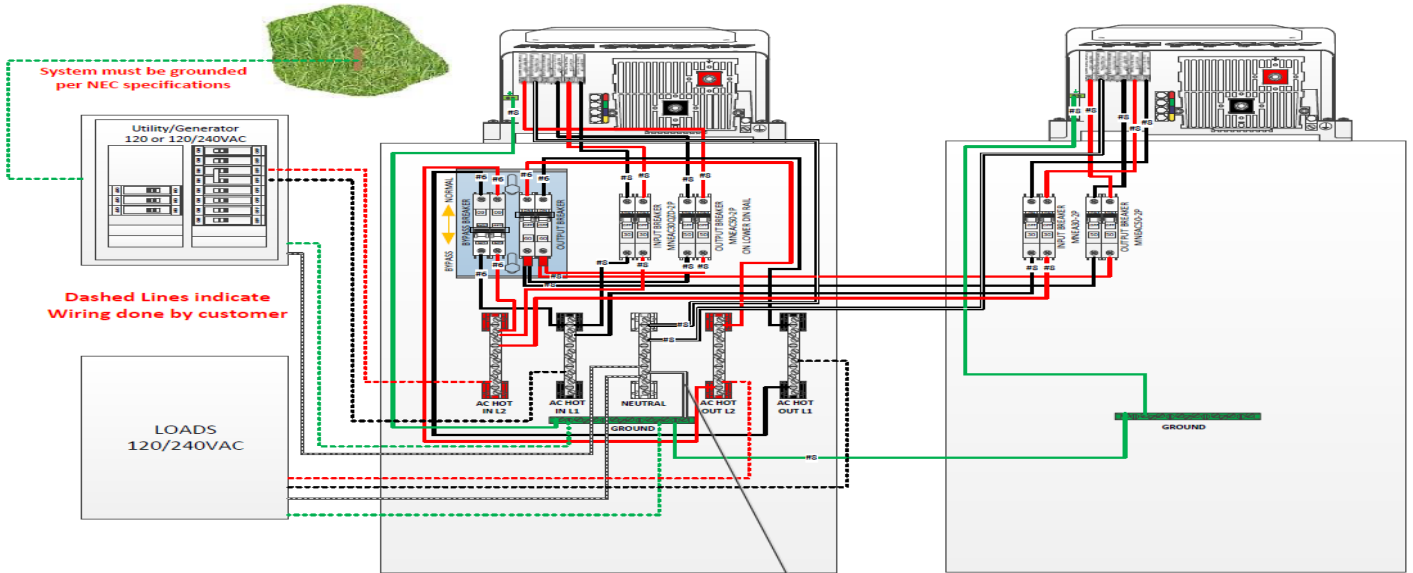
System calculated for;

- Up to 15 kWh/day, 8800W continuous total load
- 3 Peak Sun Hours (lowest in December)
- 2 days autonomy
- 50% Battery DOD
- 20% Temperature Co-efficient
- 10% Inverter Efficiency Derate
- 15% Module Shading Derate
- 40% Module Derate

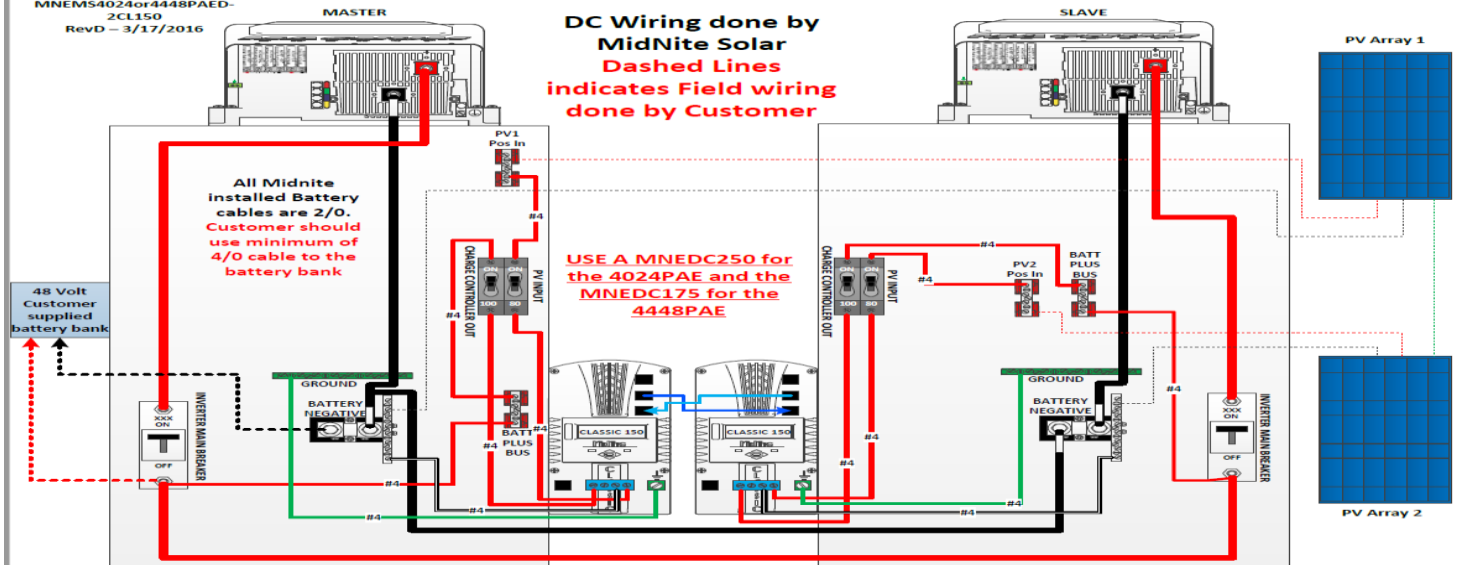


1010 Adelaide St. S.
London, ON N6E 1R6
519-690-1526 tf: 1-888-204-9989

www.guillevingreentech.com



DC Wiring done by MidNite Solar
Dashed Lines indicates Field wiring done by Customer



Communications cabling, BTS Cables, Surge Protection ETC

